






# Modul-Bio

High-throughput solutions

**Modul-Bio** utilizes unique innovative technology to provide increased throughput for data management and sample handling in all your large scale projects in biology.

Our unique product portfolio combines :

-  Client/server database integration with laboratory instruments and robots.
-  Customization and programming of robots.
-  Conceptualization and implementation of state of the art robotic platforms.

Our customized solutions for the challenges of large-scale sample manipulation and data management will allow you to radically improve the way you work to achieve your goals in the new era of systems biology.

## Software

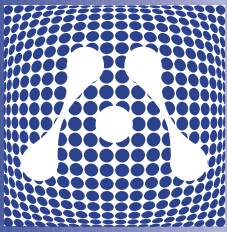
We are able to deploy, at your facility, a unique solution based on a client/server database engine tailored to your specific needs and requirements. We can integrate and interconnect many lab instruments to this database engine through our exclusive software modules.

These software modules enable lab instruments:

- to recognize and identify the samples they are processing through bar-coding integration (plates and tubes management).
- to communicate with one another on a network.
- to report, without human intervention, their results to the database.

These software modules also enable users to track, analyse, accept/reject, count, and validate all results associated with all samples.



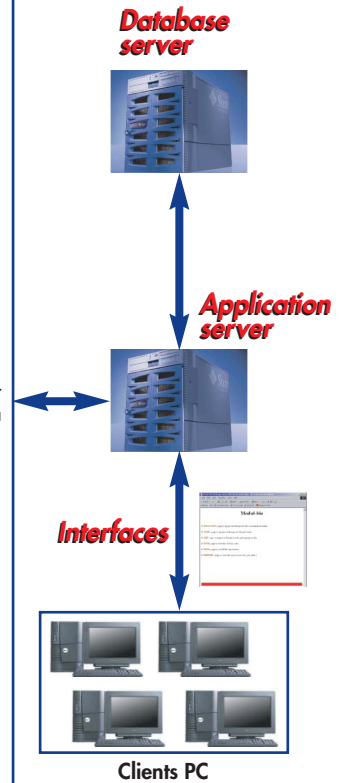


The software modules that we have developed are flexible, evolutive and easily adaptable to different types of lab instruments and robots from various manufacturers. Our unique approach allows us to build very robust, scaleable and modular software platform that can manage a variety of lab instruments/robots/machines while providing a centralized database. This approach is key to a unified data access. These software modules ensure in real-time full integrity, traceability and security of the samples and the resulting data.

### Your instruments

	DNA Purification GENTRA™
	Barcode Printer ZEBRA™
	2D Barcode Reader RVSJ™
	Pipetting 8 Tips TECAN™
	Pipetting 96 Tips BECKMAN COULTER™
	Spectrophotometer MOLECULAR DEVICES™
	Gel Imager BIO-RAD™
	Genotyping PERKIN ELMER™
	SNP PYROSEQUENCING™
	SNP SEQUENOM™
	Robot ADEPT™

### Our solutions



Ask us for more information on other lab instruments

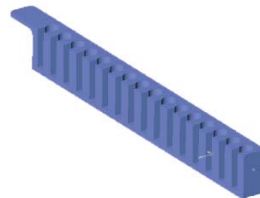
# Robotics

We are able to adapt new biological protocols to any of your own robots through programming and customization.

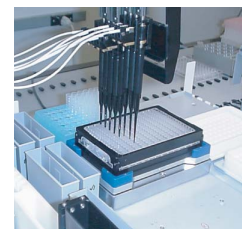
These adaptations include:



Design and fabrication of mechanical parts (racks, holders, trays, troughs...).



Integration of new devices (mechanical and software).



Programming of new protocols.



In addition, we develop robotic platforms designed for high-throughput biology allowing you to automate protocols that may be performed manually in your facilities.



SAS Modul-Bio  
232, bd Sainte-Marguerite  
13009 MARSEILLE - France  
Voice : +33 (0)4 91 22 33 05  
Fax : +33 (0)4 91 22 35 72  
info@modul-bio.com  
www.modul-bio.com

#### Publications:

- "A Magnetic Attraction to High-throughput Genomics", *Science* (1997) Vol. 276.
- "Automation Increases Throughput in Genomic D.N.A. Library Normalization by 10X", *JALA* (2000) Vol.5, No 2.
- "C. elegans ORFeome version 1.1: experimental verification of the genome annotation and resource for proteome-scale protein expression", *Nature Genetics* (2003) Vol 34.
- "WorfDB: the *Caenorhabditis elegans* ORFeome Database", *Nucleic Acids Research* (2003) Vol.31, No 1.